

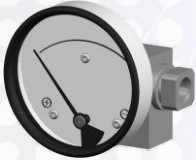


## 200 DPG

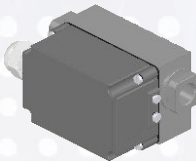
**DP Range:** 0 to 0.15 upto 70 bar  
0 to 5 upto 1050 psi

### COMBINATIONS

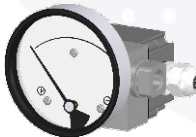
#### Gauge



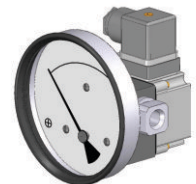
#### Switch



#### Gauge + switch (with a terminal strip inside)



#### Gauge + switch (with a DIN plug on top)



### MOUNTING BRACKETS

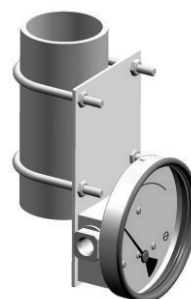
#### Surface mounting



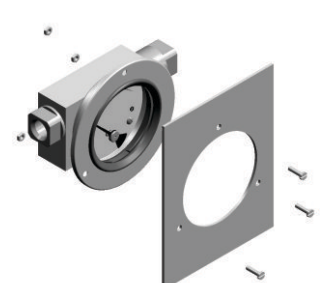
#### Horizontal pipe mounting



#### Vertical pipe mounting



#### Panel / Flange mounting



### Specifications

Accuracy	±2% of the FSD (Ascending) ; Higher accuracy on request
Migration	Minor from high to low port
Range	0-0.15 to 0-70 bar or equivalent ranges in other units
First marking on the scale	20% of the FSD
Sensing element	Piston
Wetted parts	Body material, SS 302 spring, ceramic magnet, seals
Case material & dial size	Stainless steel (SS 304): 2", 2.5", 3.5", 4", 4.5", 6" Engineering polymer: 2.5", 4.5", 6" Bayonet: 4", 6" (available with safety glass only)
Mounting	Direct, front flange, 2" pipe & surface mounting
Maximum working pressure	Alu, Brass: 200 bar (3000psi) ; SS 316, Monel: 400 bar (6000psi)
Maximum process temperature	0 to 80°C (32 to 175°F)
Body material	Aluminum, Brass, SS316, Monel
Seals	Buna-N, Viton™, EPDM, Teflon™
Window	Float glass (Std.), toughened glass, acrylic & safety glass
Connection	1/4" NPT(F) (Std.), 1/4" BSP(F) and others (through adaptor)
Porting	In-line, rear, bottom, in-line & bottom, in-line & back
Over range protection	Up to the max. working pressure from high side
Ingress protection	IP 66 / NEMA-4X

### Options

- Liquid filling (glycerine/ silicone)
- Red follower pointer
- Customer logo
- Dual scale
- Color band
- Filter mesh in (+) connection
- Reverse port (pointer moves from right to left)
- Descending calibration
- Thick body for 450 bar application

### Switches (Adjustable in 30-100% of FSD)

- 1 or 2 SPSTs with a DIN plug
- 1 or 2 SPSTs with a terminal strip
- 1 or 2 SPSTs with a built in relay
- 1 or 2 SPSTs with DIN plug
- 1 or 2 SPSTs with a terminal strip

Also available with EX-proof box

Also available as center zero

### Available in engineering polymer (EP) Case



- Removable glass
- Strong and durable
- Panel mounting possible
- Condensation can be cleaned
- Light weight