



## 600 DGC

**DP Range:** 0 to 7.5 upto 1250 mm H<sub>2</sub>O  
0 to 0.3 upto 50 inch H<sub>2</sub>O

### COMBINATIONS

#### Gauge



#### Switch



#### Gauge+switch (With a DIN plug on top)



### Specifications

Accuracy	±3% of the FSD (Ascending), 2% on request
Migration	No migration ; Zero leakage from high to low port
Range	0-0.3 to 0-50 in water or equivalent ranges in other units
First marking on the scale % of FSD	0-7.5mmwc (25%), 7.5mm-30mmwc (20%), > 30mmwc (10%)
Sensing element	Diaphragm
Wetted parts	Diaphragm, body material, SS 302 spring & ceramic magnet
Case material & dial size	Stainless steel (SS 304): 4.4" (112mm)
Mounting	Flush (Std), Direct, front flange, 2" pipe & surface mounting
Maximum working pressure	2.4 bar (35 psi)
Maximum process temperature	0 to 60°C (32 to 145°F)
Body material	Engineering Polymer
Diaphragm	Buna-N (Std), Viton™, EPDM, Silicone (Range limitations for non std.)
Window	Float glass (Std.), toughened glass, acrylic & safety glass
Connection	1/8" NPT (F)
Porting	In-line, back, in-line & back
Over range protection	Up to the max. working pressure from high side
Ingress protection	IP 65 / NEMA-4

### Options

Liquid filling (glycerine/ silicone)
Red max. setting pointer
Customer logo
Dual scale
Color band
Filter mesh in (+) connection
Descending calibration

### Switches (Adjustable in 30-100% of FSD)

1 or 2 SPSTs with a DIN plug
1 SPDT with DIN plug

Also available as center zero

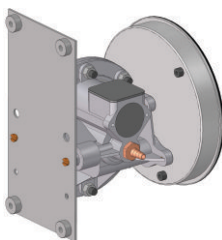
*Switch can be added anytime on the field*

### Accessories supplied with instrument



### MOUNTING BRACKETS

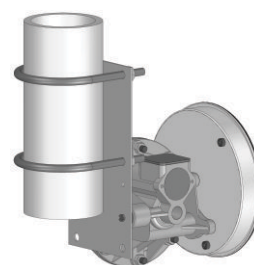
#### Surface mounting



#### Horizontal pipe mounting



#### Vertical pipe mounting



#### Panel / Flange mounting

